



P·A·C·E·R
SOLUTIONS

Streamlining critical
business processes into
easily accessible solutions.

SOLUTIONS OVERVIEW

CONSTRUCTION & ENGINEERING INDUSTRY



COMPLIANCE

Instant ISO compliance, SWMS, JRA, and vehicle pre-start reports — just a click away.



EFFICIENCY

Real-time field data for faster action, reduced downtime, and smoother workflows.



PROFITABILITY

Increase margins, get paid faster, and maximise asset and labour returns.



QUALITY

Trusted
Microsoft service
provider



SERVICE

Reliable local
support



EXPERTISE

Extensive
industry
experience

About Pacer Solutions

Since 2020, Pacer Solutions has helped businesses streamline operations with tailored, integrated technology solutions. We go beyond off-the-shelf systems, ensuring seamless data flow, scalable operations, and uninterrupted growth.

Many clients turn to us after struggling with systems that overpromise and underdeliver. We specialise in integration, consolidation, and optimisation—helping businesses not just compete but thrive. Our solutions enhance efficiency while preserving operational uniqueness.

Led by Ciaran Monks, with over 25 years of experience in corporate finance, system design, and business leadership across Europe and Australia, Pacer Solutions works closely with clients to develop tailored strategies. We have successfully implemented solutions for numerous construction businesses, driving long-term value and efficiency.

Addressing the Challenges across the Construction Industry:

- **Complex Operations** – Managing multiple moving parts across projects, teams, and sites.
- **Heavy Compliance & Safety Demands** – Meeting strict regulations while ensuring workplace safety.
- **Optimising People & Assets** – Tracking and maximising workforce and equipment efficiency to stay profitable.
- **Limited Real-Time Updates** – Field teams struggle to access and action updates without computer access.
- **Multiple Jobs, Multiple Sites** – Coordinating resources across various locations efficiently.
- **Need for Complete Project Control** – Maintaining visibility and oversight from start to finish.
- **Time-Poor Business Owners** – Juggling daily operations with little time to focus on system improvements.

Solving Construction Challenges
With Smart, Seamless Solutions.

The Pacer Solutions Approach

At Pacer Solutions, we simplify challenges by integrating tailored technology that ensures seamless data flow, better resource management, real-time updates, and full project oversight for construction businesses. This drives efficiency and profitability while helping businesses thrive.



COMPLIANCE

Instant ISO compliance, SWMS, JRA, and vehicle pre-start reports – just a click away.



EFFICIENCY

Real-time field data for faster action, reduced downtime, and smoother workflows.



PROFITABILITY

Increase margins, get paid faster, and maximise asset and labour returns.

Quality Business Solutions

OUR QA PROCESS

- Thorough QA Testing
- Environment Workflow
- Post-Launch Support
- Ongoing Management

OUR CERTIFICATION & ACCREDITATIONS

- Microsoft Partner
- Microsoft ISV
- Google Developer
- Apple Developer
- SimPRO Partner

POST-LAUNCH MANAGEMENT SUPPORT

- Central Portal access
- Power BI Fabric capacity for dashboards & analytics
- Unlimited user access
- Tech support via service requests
- Minor application updates
- Minor iOS & Android mobile app updates
- Support for scoping improvements



SERVICE

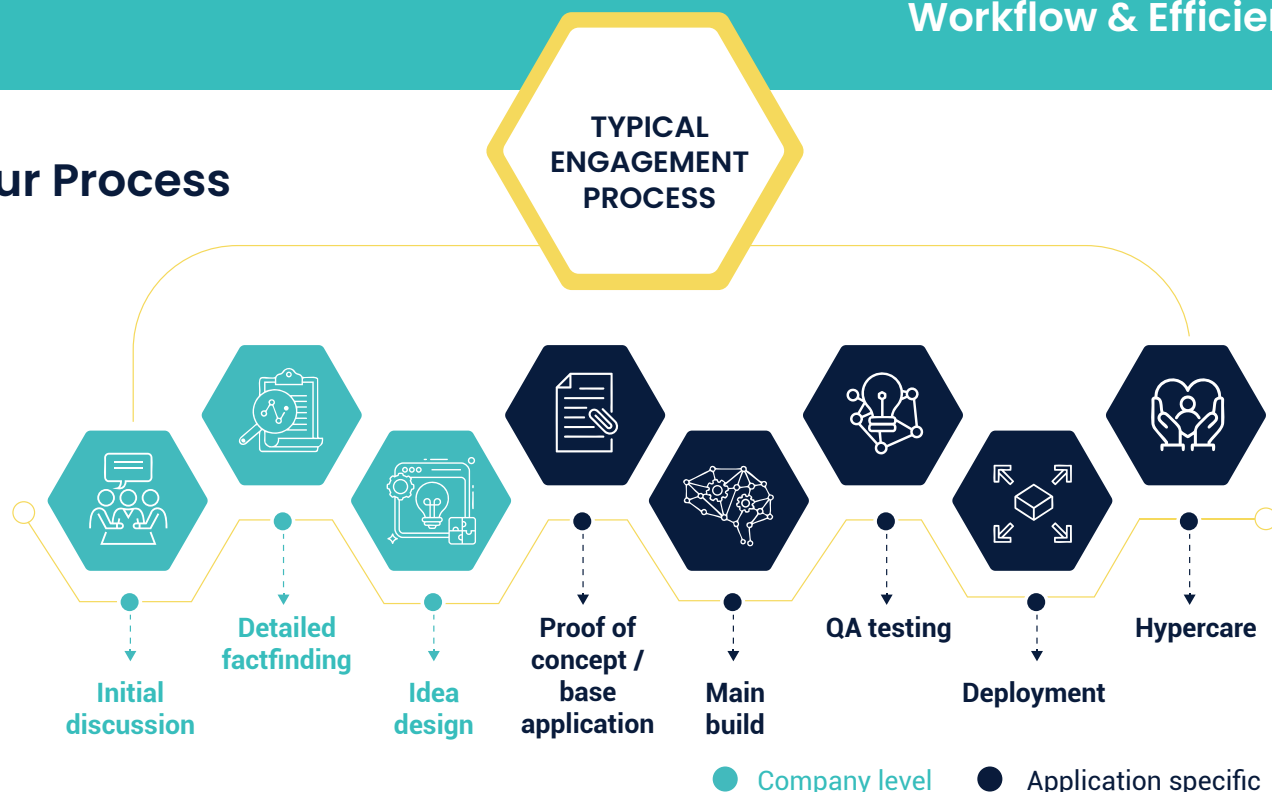


QUALITY



EXPERTISE

Our Process



| Construction Sector System Modules | Business Core | <ul style="list-style-type: none"> • Business Strategy • Staff Management • Staff onboarding • Business Relationship Mgmt • Learning Mgmt System • Asset Management |
|------------------------------------|---------------------|---|
| | Safety & Compliance | <ul style="list-style-type: none"> • Incident Submission • Incident Management • Risk Assessments • Site Pre-Starts • Integrated Safety Hub • Vehicle Pre-Starts • SWMS Management • Daily Dockets |
| | Management | <ul style="list-style-type: none"> • Phone App (Apple & Android) • Time Management • Quoting / Measuring up • Resource Allocation (scheduling) • Job / Project Management • Workshop Management • Meeting records • Attendance Application • Reporting dashboard |



Modular Solutions Tailored for the Construction Industry

- **Every component customised** – meeting each client's specific needs.
- **Designed to integrate** – seamless with existing processes, minimising disruption and risk.
- **Streamlined applications** – provide essential functionality without unnecessary complexity.
- **Modular deployment** – allows gradual adoption, ensuring smooth onboarding and employee buy-in.
- **A fully branded system** – portals, apps, forms, and reports—creates a cohesive and professional look.

PLATFORM CAPABILITIES:

- **Reliable Systems** – Built on robust, scalable Microsoft platforms.
- **Microsoft-Powered** – Continuous innovation ensures long-term relevance.
- **Certified Expertise** – Microsoft Partner for MSP, solutions, and Power Platform.
- **Optimised Licensing** – Helps businesses maximise Microsoft subscriptions.
- **Seamless Integration** – Connects with any API-enabled system.
- **Flexible Interfaces** – Supports phone apps, portals, and responsive designs.



**Microsoft
Is The Global
Backbone
Of Security.**

The Industry's Choice For Smarter, More Efficient Construction Solutions.

Key Challenges We Solve:

- **Complex Operations** – Seamlessly manage multiple projects, teams, and sites.
- **Compliance & Safety** – Stay ahead of strict regulations while ensuring workplace safety.
- **Optimising People & Assets** – Maximise workforce and equipment efficiency for better profitability.
- **Real-Time Updates** – Empower field teams with instant access to critical project information.
- **Multi-Site Coordination** – Efficiently allocate resources across multiple jobs and locations.
- **Complete Project Control** – Gain full visibility from planning to completion.
- **Supporting Time-Poor Business Owners** – Free up valuable time by automating and refining business processes.

| CASE STUDY | BUSINESS TYPE | SCOPE OF PROJECT |
|------------------------------------|---|--|
| AFM Roofing - VIC | Roofing - Residential, Commercial & Government | <ul style="list-style-type: none">• Develop time management solution integrated with MYOB.• Enable staff to request leave with management approval.• Sync data with job scheduling and SimPRO.• Allow resource allocation & time recording on site. |
| Pro Contracting - NSW | Civil Contractor | <ul style="list-style-type: none">• Replace Assignar with a new operational system for construction.• Enhance Daily Dockets, Workshop/Mechanic management, & communication.• Improve reporting, billing, time management, & job/sub-contractor management. |
| Total Environmental Concepts - QLD | Land management, Environment protection. | <ul style="list-style-type: none">• Design and build a full system for Staff Management, Onboarding, Learning, Safety, Job & Client Management.• Integrate with Xero.• Enhance with Geo Coding, council asset monitoring, & mapping. |
| SC Quality Roofing - NSW | Roofing - Residential & Commercial | <ul style="list-style-type: none">• Design & build business management system with SimPRO for job management.• Create apps for job scheduling, asset tracking, & safety management.• Support ISO adherence & reporting.• Augment with data analytics & reporting. |
| Encompass Safety - QLD | Safety Consultant, ISO Audit, Training provider | <ul style="list-style-type: none">• Design & build business management system with central head office control.• Manage leads, quality control, & representative onboarding.• Enhance with territory management, task management, & collaboration on support materials. |

More Construction businesses are adopting customised solutions:

- There is a growing trend in construction towards using customised systems instead of off-the-shelf solutions.
- Custom software allows for tailored functionality, seamless integration, and scalability to meet unique requirements.
- It enhances staff engagement and accountability while enabling quick innovation to meet project and client needs.

Our Certification and Accreditations

 Partner

Microsoft
Partner

 Google
Developers

 Developer

 CIMA

 CPA
AUSTRALIA

Microsoft endorsements

Pacer is a **Microsoft Independent Software Vendor (ISV)** this ensures that our solutions are backed by Microsoft's review process and support. It also gives us access to additional tools and capabilities to support our client's development projects.

CONTACT DETAILS:

Ciaran Monks
P: 1300 722 365
E: info@pacer.solutions
W: www.Pacer.Solutions